

Personal Comments - Museum

In 2007 I started my now ongoing series of paintings about people in museums. It started out as a break from my usual subject matter for my blog, but now I'm kind of addicted making these scenes.

For one I really like the double layer, on the painting people are looking at art, but you as a viewer are doing the same thing. Second I'm learning so much as a painter 'copying' the some of the greatest masters of the past and present.

I now have painted over 75 museum paintings and sold almost every single one of them. The paintings shown here are my most recent museum scenes and currently available.

If you have any questions, remarks or are interested in purchasing a painting please don't hesitate to contact me anytime. I would be happy receiving your comments or inquiries and respond to them personally.

kind regards, Gerard Boersma

Wissesdwinger 1, studio no. 15
8911 ER Leeuwarden, The Netherlands
studio: 0031 (0) 58 2151276
mob: 0031 (0) 6 22477236
home: 0031 (0) 58 2895848
info@gerardboersma.nl



Entombment, acrylics on masonite, 35.6 x 27.6" or 90,3 x 70 cm, 2009

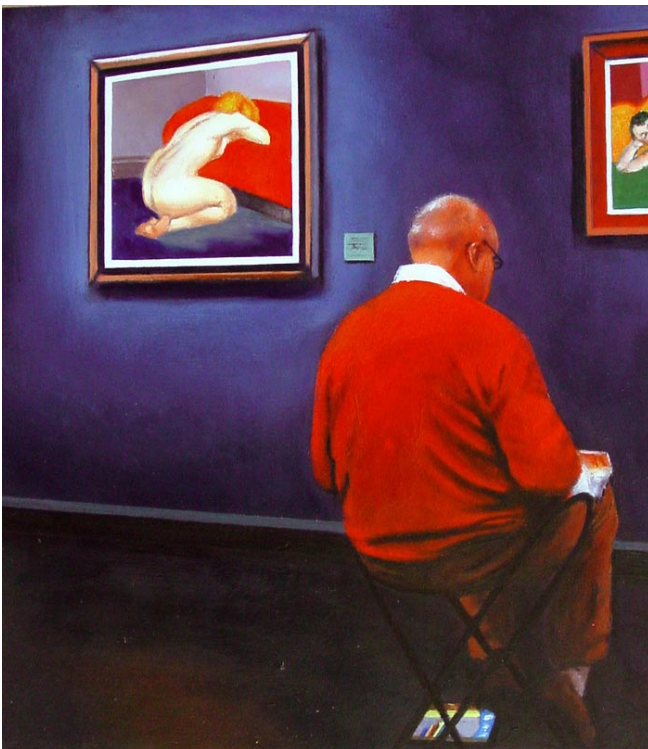
Entombment

In the Getty Center in Los Angeles I saw this tour taking place right in front of a couple of paintings by Peter Paul Rubens. The tourguide is talking about Rubens painting Entombment from about 1612. The painting depicts the moment after the Crucifixion and before the Resurrection when Christ is placed into the tomb.

While painting I suddenly realized that I was competing against one of the great masters of the past. I just had to get the paintings right or else my whole painting would fail. This made me a little nervous I can tell you, but the part which eventually gave me the most trouble was the green background. Go figure, not having any troubles with the Rubens, but with the plain background! In any case I'm really satisfied with the results and feel it's one of the best paintings from my museum series yet.

The Drawer

In the Hamburger Kunsthalle I saw this guy trying to make a drawing of the lovely paintings displayed by Felix Vallotton. There actually was a whole class scattered over the exhibition making drawings, but this guy caught my eye because of his red shirt against the red in the painting. It works quite well.



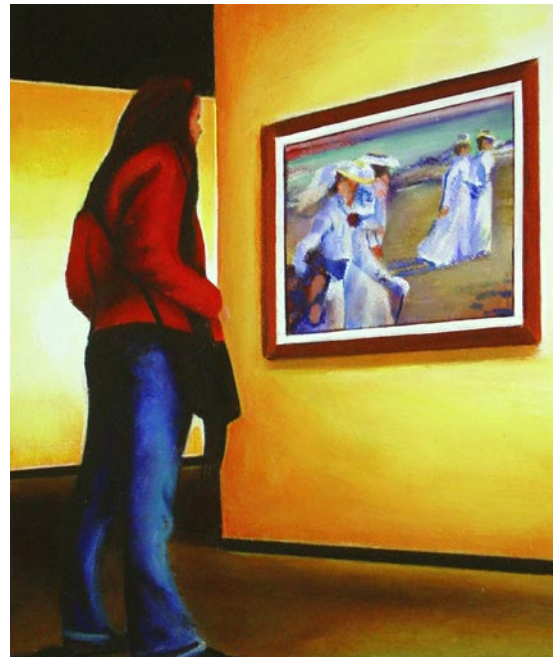
The Drawer, acrylics on masonite, 13.8 x 12" or 30,6 x 35 cm, 2008

Young Ladies

The young woman is looking at 'Young ladies on the beach' by Théo Rysselberghe (1862-1926). This Belgian painter is one of the most important figures in the field of Neo-impressionism and introduced the pointillist technique of Seurat and Signac in Belgium.

It was quite a challenge for me to paint an impressionist painting, the colors are completely different from what I usually use!

I thought the contrast between young ladies early 20th century and a young lady from our day and age is quite interesting. The painting is situated at The Royal Museum of Fine Arts in Brussels.



Young Ladies, acrylics on masonite, 9.9 x 8.7" or 25,2 x 22 cm, 2008



The Statue, acrylics on masonite, 13.8 x 12.6" or 35 x 32 cm, 2008

The Statue

In 2008 I visited the Kunsthalle in Hamburg, Germany where I saw this lady looking at a painting by Manet, the famous impressionist painter.

I love the composition with the large statue in the foreground on the right and the figure and painting on the left. I gives the painting its dept I think.

Sea

On this painting you see a woman looking at a painting by Rothko. I'm not fond on abstract painting at all, but his I like.

You really have to see the Rothko in person to fully appreciate it. The colours are amazing! It's like a sea surrounding you on all sides. That's why I named the painting Sea.

I saw the Rothko painting at the Getty Center in Los Angeles. A great museum up in the hills. You drive up to it by freeway, park your car and take a tram up the hills to the museum. The architecture is great, but the views are even more amazing. If you ever happen to be in LA, make sure you visit this museum!.



Sea, acrylics on masonite, 27.6 x 24" or 70 x 61 cm, 2009



The Attendant, acrylics on masonite, 9.9 x 8.7" or 25,2 x 22 cm, 2009

The Attendant

It doesn't matter which great museum you visit, they're bound to have a couple of old Dutch master paintings hanging there. Being a Dutchman and painter myself that always makes me proud.

The Getty Center in Los Angeles is no exception to the rule. It has loads of Dutch master paintings. On my painting you see a lovely landscape by Hobbema on the left and in the background a painting by Rembrandt, all guarded by an attendant of the museum.

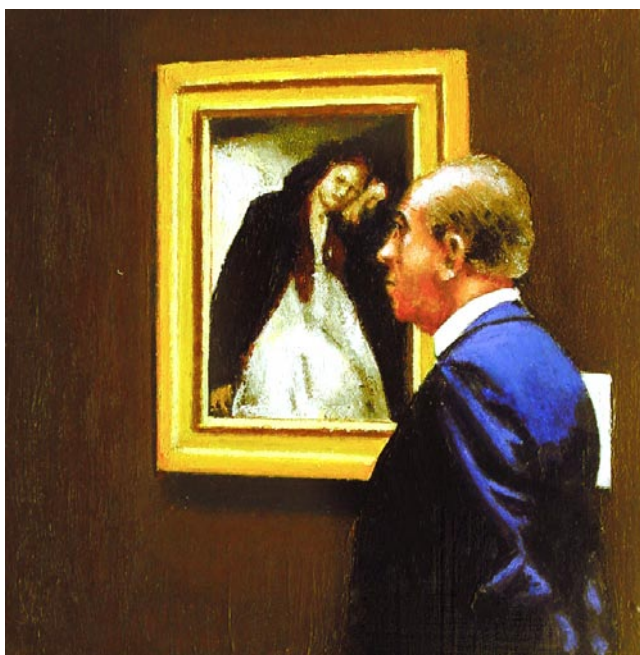
I tried a different colour scheme as I used to, which works quite well. Also worked for a change with many underlayers in different colours, especially at the walls. It gives them more structure and subtle colour changes.

Yellow

The woman with the yellow shirt, after which I entitled my painting, is looking at Abduction of Europe by Claude Lorrain. This painter is mostly known for his landscapes full of light. Although his paintings sometimes are a bit too composed for me, I always love to look at them, the lighting is always amazing. Lorrain could hardly count and read, but he sure could paint! The scene takes place in the Getty Center in Los Angeles.



Yellow, acrylics on masonite, 6 x 6" or 15 x 15 cm, 2009



Convalescent, acrylics on masonite, 6 x 6" or 15 x 15cm, 2009

Convalescent

One of my all time favourite painters is Degas and on today's painting you see his Convalescent. The painting depicts a woman who's succumbed in great sorrow. The painting attests to Degas's interest in the world of women. My figure doesn't seem to be that interested in the painting, but is focused on something we cannot see. I thought the contrast between the woman in great sorrow and the man not caring much is quite interesting.

The Iceberg

In the Kunsthalle in Hamburg hangs this masterpiece of a shipwreck by Casper David Friedrich. The ship itself is covered by the man, but you sure can see the great ice landscape. I just had to paint that!

Contact

If you have any questions, remarks or are interested in purchasing a painting please don't hesitate to contact me anytime. I would be happy receiving your comments or inquiries and respond to them personally.

kind regards, Gerard Boersma

Wissedwinger 1, studio no. 15
8911 ER Leeuwarden, The Netherlands
studio: 0031 (0) 58 2151276
mob: 0031 (0) 6 22477236
home: 0031 (0) 58 2895848
info@gerardboersma.nl



The Iceberg, acrylics on masonite, 13.8 x 12" or 35 x 30,6 cm, 2008, sold